

Meadows Committee Update

12 August 2024



The (Ad Hoc) Meadows Committee

Committee Members:

- Bruce Daggy
- Georgette Cole
- Audrey Maskery
- Joan Mahaffey
- Pat Klein
- David Stopak
- Donna Shriner
- Anne Vincent
- Kriss Grisham – TC Liaison

Associates:

- Ernie Kawasaki
- Jay Everhart
- Paula Puglisi
- Multiple volunteers for Weed Warrior events

Purpose of the Meadows Committee

- When the Conservation Park was created, the Operation & Use Plan (2013) specified it was to be maintained as a meadow. That hasn't been happening.
- Reach out to Montgomery Parks about restoring the meadow
- Engage with Parks and volunteers to improve the ecological health of the Conservation Park meadow
- Also seek to engage with Parks to maintain the lower meadow (Piedmont Crossing Local Park)

Meadow Management & Restoration Program



Related Parks / Trails

This project impacts these parks / trails.

[Rock Creek Regional Park](#)

[Rock Creek Regional Park – Trails](#)

[Locust Grove Nature Center](#)

[Cabin John Regional Park](#)

[Cabin John Regional Park Trails](#)

Parks Staff Contact:

Dianna Loescher, Senior Natural Resources Specialist

Current Projects: Sligo-Dennis Stream Valley Unit #4, Rachel Carson Conservation Park, Meadowside Nature Center, Locust Grove Nature Center

The Value of a Meadow



Meadows serve as a natural reservoir for water



Meadows capture and store carbon and help purify the air



Meadows help maintain the diversity of our ecosystems.



Meadows provide great recreation.

Weed Warrior Events

Removing wineberry, Japanese honeysuckle, mile-a-minute, Canada thistle, bittersweet



July 13, 2024



May 24, 2024

Maintenance Requests Submitted to Parks



2003



2012



2024



“I work with folks on the Eastern Shore who manage land for bobwhite restoration, among other bird species, and cedar is definitely an **aggressive** native that can turn a meadow into a **monoculture dead zone**. Even in terms of my agroforestry work and [it] being a host for **rust disease** which impacts serviceberry (species of untapped potential), cedar is a major pain in the butt!”

-- Francis Smith, Natural Resources Planner II, Maryland Forest Service, Department of Natural Resources

Washington Grove Phased Removals

google hybrid, Esri Community Maps Contributors, Esri, TomTom, Garmin,
Foursquare, GeoTechnologies, Inc, METI/NASA, USGS

2024

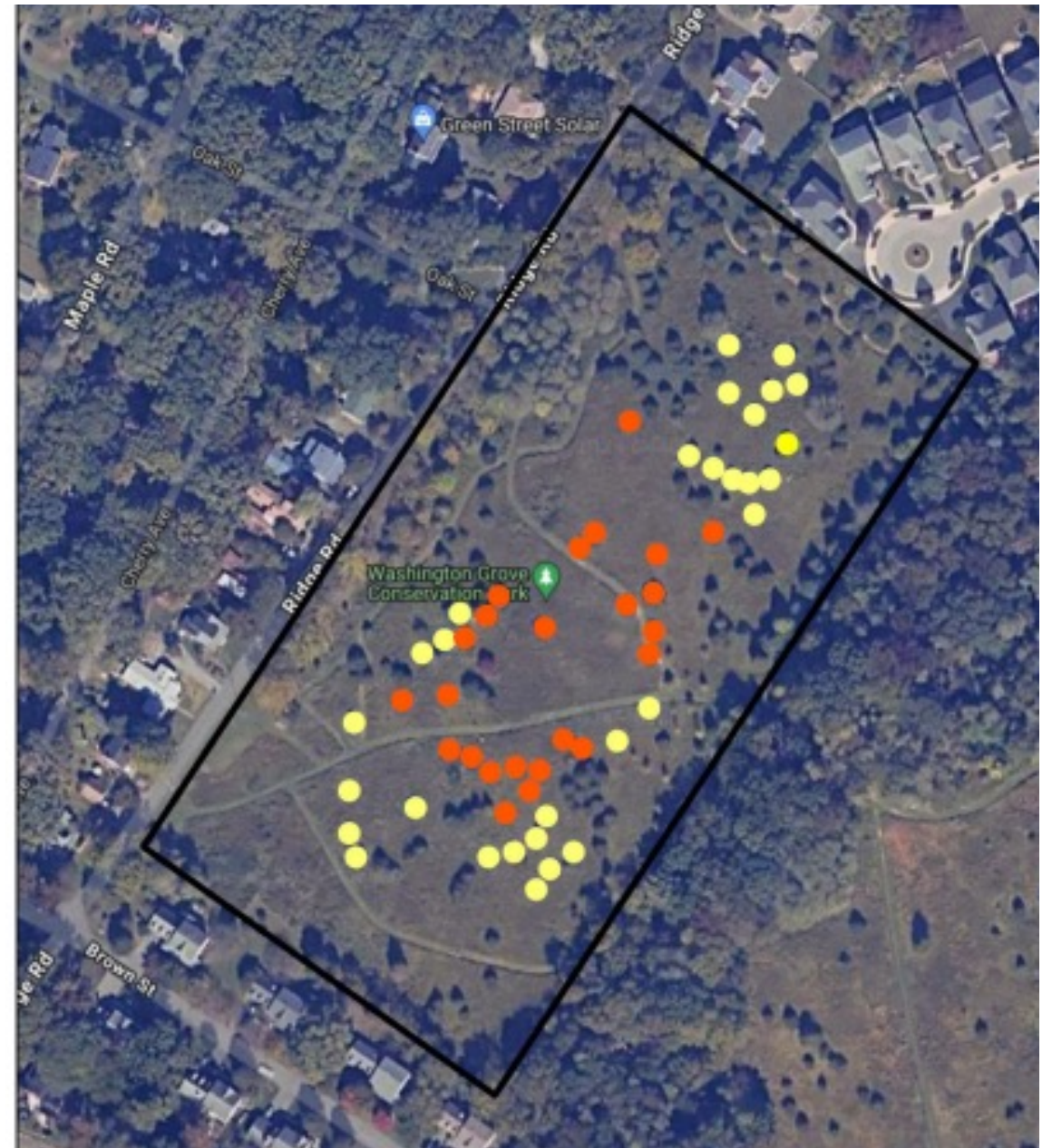
Coordinate System: WGS 1984 Web Mercator Auxiliary Sphere

**Note: Parks
counted 223
trees inside
the paths**

Legend

Phase

- Phase 1 (37 trees)
- Phase 2 (38 trees)



Funding/Resources

- Committee itself is an unfunded, all-volunteer effort
- Tree reduction one of two ways:
 - Contractor paid by a Sustainable Maryland grant
 - Parks will use internal resources
- Parks will:
 - Supply training/supervision
 - Supply seeds/plants for planting events
 - Perform maintenance activities including annual mowing